

**IRISH
SPECIAL**

24 PAGES
OF GORGEOUS
HOMES, BOLD
FASHION AND
BRILLIANT
BEAUTY

PLUS
CELEBRATE
YOUR CURVES,
THEY'RE BACK
IN FASHION

Imelda rocks

**MEET IRELAND'S
IRRESISTIBLE NEW
SINGING SENSATION**

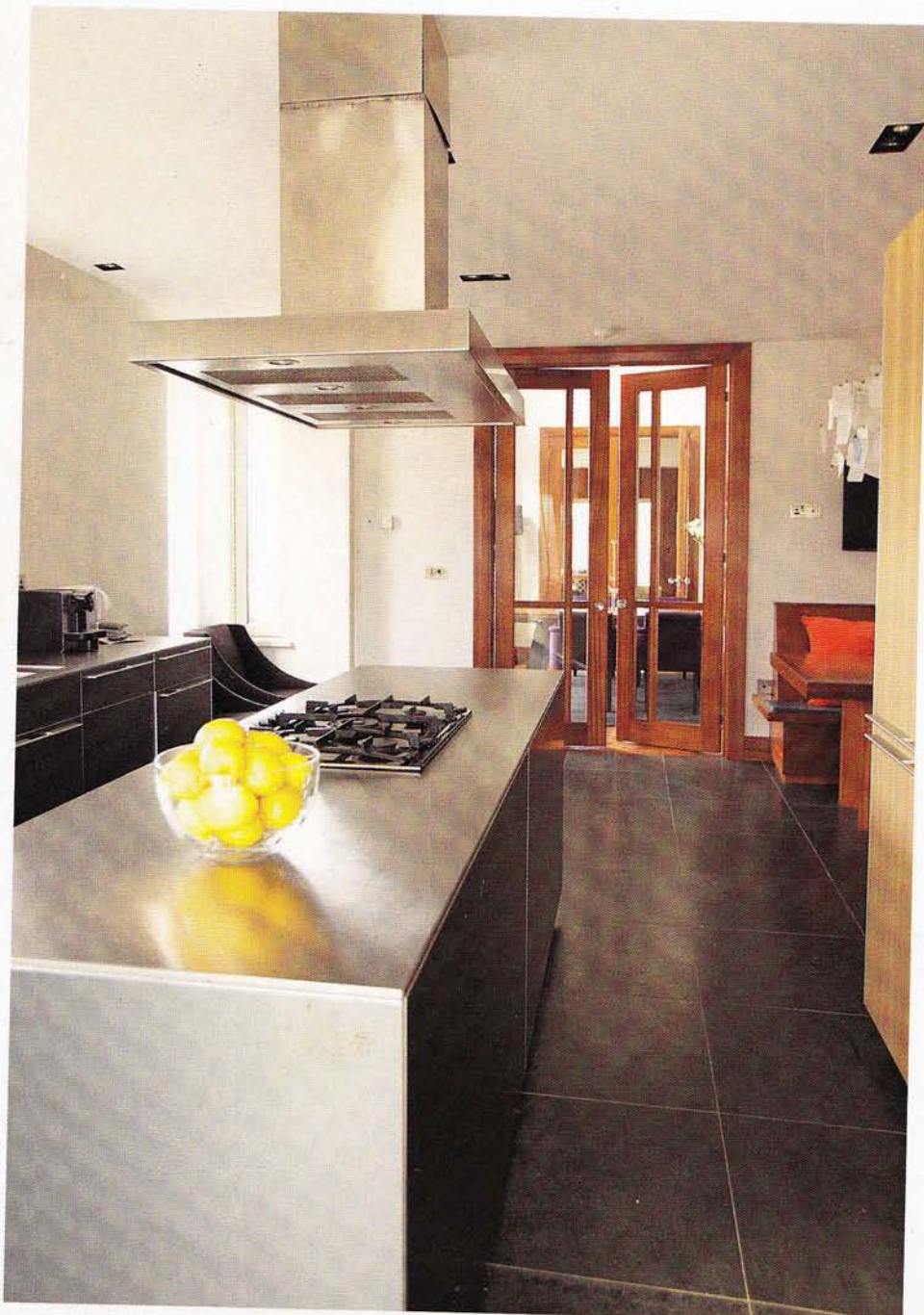
style

THE SUNDAY TIMES

APRIL 12, 2009

A little more conversation

THIS DONEGAL HOME HAS LOTS OF TALKING POINTS, INCLUDING MODERNIST PANELLING AND A BOOTH DESIGNED FOR CHATTING, SAYS **NICOLE SWENGLEY**
PHOTOGRAPHS **REBECCA DUKE**



Above 'There's nothing worse than a house with plenty of space but no personality,' says the award-winning interior architect John-Henry Boyle, 35. So he borrowed design tricks he had used at the Seafield Golf & Spa Hotel, in Wexford, when he relocated from Dublin to Donegal with his wife and business partner, Sinead, 33, and their two sons.

Left 'The kitchen is my favourite space in the house. Because James, 3, and Tim, 18 months, are so young, the room is deliberately designed for family living. The island units and conversation booth mean we can cook, talk and eat simultaneously,' Boyle says. The Bulthaup kitchen came from Kitchenhaus in Dublin (1 677 0101), while the lead basalt floor is from The Keystone Company (024 7642 2580).

Right 'I've used mahogany wall panelling in the living room because I wanted to give the space a cigar-box feel,' Boyle says. The handmade rug, which he designed, is by Donegal Carpets (donegalcarpets.com). The Anvers sofa, by Interni, came from the Boyles' own company, 21 Spaces (21spaces.com). The cushions are by Ikea and the pair of black table lamps is from La Fibule (lafibule.fr) ▶



“THERE’S
NOTHING
WORSE THAN
A HOUSE WITH
PLENTY OF
SPACE BUT NO
PERSONALITY”



Above Boyle designed the living-room fireplace and had it made by McMonagle Stone (mcmonaglestone.ie). The bold wallpaper is *Tenue de Soirée* (TP151), from Elltis (elltis.fr).

Right 'The double-height dining space creates a perfect division between the kitchen and the living room,' Boyle says. The huge rosewood-veneered table is by Interni, from 21 Spaces (21spaces.com). The stainless-steel candlestick was a Habitat spot and the Dayton dining chairs are by Marie's Corner (www.mariescorner.com). The 1920s gouache is by the collectible artist Marky Robinson, and the double-sided fireplace is from Hearth & Home (hearthandhome.ie): 'I like to create a journey in a design, with cues that lead you from one space to another — like this fireplace.'

Below Boyle designed the booth seat in the kitchen; his elder son, James, did the paintings. The Zettel light is by Ingo Maurer (ingo-maurer.com); the graphic cushions are from Ikea





4

INSPIRED BUYS...

WHAT YOU NEED TO GET THE LOOK. BY PIP McCORMAC



1 Main floor lamp €429, from [boconcept.ie](#).
2 Armitage day bed from €2,800, from [oddesign.com](#). **3** Anniversary wing chair €11,550, with an ottoman (not pictured), from [lostweekend.ie](#). **4** Zone rug €819, from [wovenground.com](#). **5** Morph cushion €27, from [hunkydoryhome.co.uk](#). **6** Ticket-office clock €140, from [fultons.ie](#). **7** Lyra table lamp €150, from [meadowsandbyrne.com](#). **8** Yellow tray €38, from [tch.net](#). **9** Archipel sofa, with ottoman from €6,545, from [mcnallyliving.ie](#). **10** Italian walnut chair €850, from [watshambohn.com](#). **11** Assisi 1380 table €2,158, from [wharfside.co.uk](#)