

# NIGHT FEVER 2

*Hospitality Design*



THREE VOLUMES  
EAT  
DRINK  
SLEEP

FRAME

# MILANO

## 21 Spaces

**WHERE** DUBLIN, IRELAND  
**OPENING** JULY 2008  
**CLIENT** AGENBITE  
**FLOOR AREA** 263 M<sup>2</sup>  
**CAPACITY** 225 GUESTS

The Milano restaurant chain operates a number of highly recognizable and acclaimed pizza establishments in Ireland. Milano's ethos of fast, informal and consistently good food is something that 21 Spaces wanted to reflect in its design of the Dublin location. By updating a former Victorian bank building and adding a new extension, the designers created an entirely new, cohesive restaurant design that beckons passers-by to grab a bite to eat and linger to enjoy the atmosphere. Both

spaces retain their distinctive qualities: the older section, with its ornate ceiling, still personifies valued traditions, while the extension exudes a fresh complementary rawness. Visually connecting the two areas are white-oak walls and floors with a matte finish; a display unit that spans nearly 20 m creates a physical link. Nothing, however, sets the stage for delicious hot pizza better than beautiful white Carrara marble, which adds another touch of Italian authenticity to Milano's Dublin location.

**01** JAKOB BERG'S FLOW CHAIR, MADE OF FORM-PRESSED PLYWOOD, COMPLEMENTS THE LOOK AND FEEL OF MARBLE AND TIMBER TO ENHANCE THE ATMOSPHERE AT MILANO.

**02** THE RESTAURANT OCCUPIES TWO BUILDINGS, WHICH ARE CONNECTED VISUALLY BY BACK BAR DISPLAY UNIT WITH A SPAN OF NEARLY 20 M.

**03** CROWNING THE OPEN-PLAN KITCHEN IS AN EXTRACTOR HOOD HOUSED IN A DOME, 4 M IN DIAMETER, WITH EXPOSED PLY AND LAMINATE FINIS.

**PHOTOS** ROS KAVANAGH

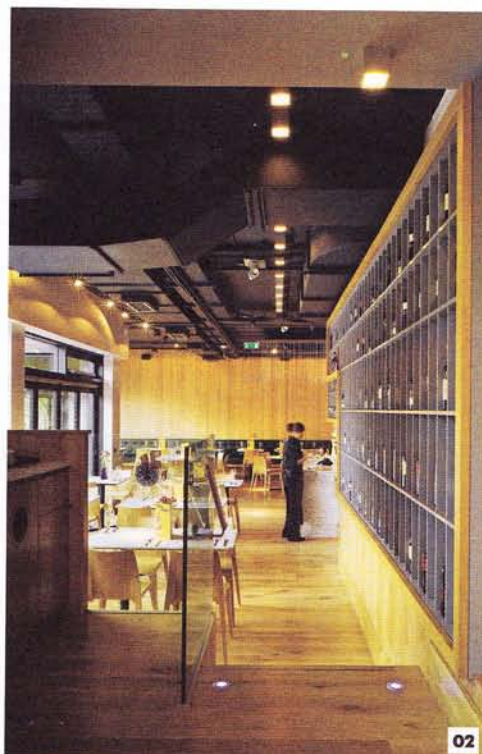
### ABOUT 21 SPACES

*The husband-and-wife team of John-Henry and Sinead Boyle opened their design studio, 21 Spaces, in 2002 and have since been regarded as one of Ireland's most progressive interior-architecture practices. Based in Dublin, the design duo aspire to create high-quality built environments that are a sensitive blend of material, light, space, structure and arrangement.*

[www.21spaces.com](http://www.21spaces.com)



01



02

- 1 COUNTER
- 2 PIZZA OVEN
- 3 DINING AREA
- 4 LAVATORIES
- 5 TERRACE
- 6 SERVICES
- 7 STORAGE

